

# Xatellite B Series

## Xatellite B Industrial Grade Indoor CPE

B1 edition: 4G

B2 edition: 4G + 4G dual

B5 edition: 5G

B54 edition: 5G + 4G combo



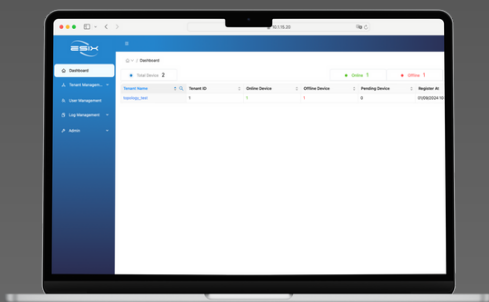
### High speed of Ethernet ports and WiFi 6

Providing Gigabits data transmission capabilities. Enables WiFi6 dual-band frequencies of 2.4GHz and 5GHz. Transfer large amounts of data across your corporate network, improving work efficiency.

### Across network Overlay pure L2 or L3 tunnel

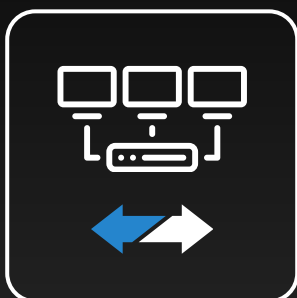
Pure L2 or L3 tunnels covered by the network have the advantages of improving efficiency.

## SDM Central Management



It supports centralized device management with multi-tenant mode, allowing for efficient management of devices across multiple locations or branches.

## SD-WAN Ready



Enhance your SD-WAN deployment with the power of Multi Ethernet WANs, Dual 4G, 5G&4G combo, and Wi-Fi WAN. You can leverage all available WAN connections to ensure uninterrupted connectivity and keep your business operations running smoothly.

## Network Bonding, Failover

Bonds multiple networks together, including Multi-WAN capabilities, to create higher bandwidth. It seamlessly switches between connections within milliseconds for low latency and safe operation.



## Use Cases



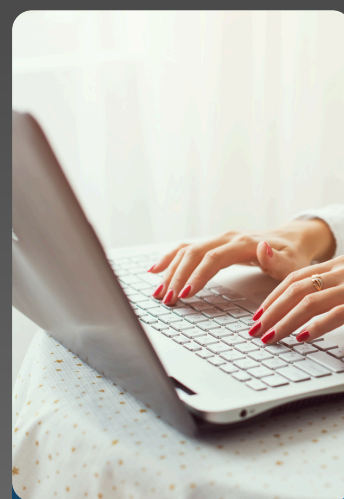
Carpark,  
Charging Station



POS, Kiosk



IOT,  
Remote Surveillance



Home Office,  
Mobile Office

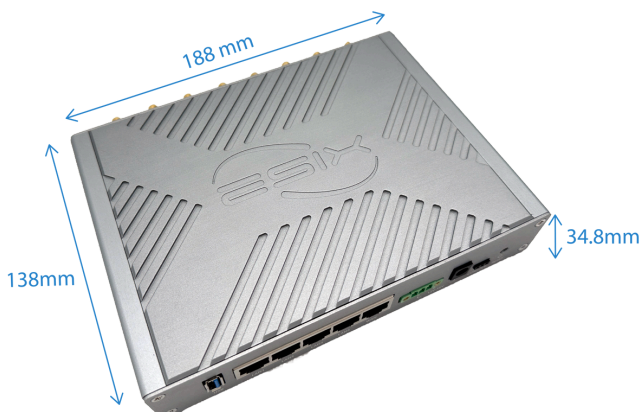
# XATELLITE B SERIES SPECIFICATION



Xatellite	Series	Xatellite B			
	Edition	B1	B2	B5	B54
Summary	Mobile	4G	4G + 4G	5G	5G + 4G
	Wi-Fi	Wi-Fi 6	Wi-Fi 6	Wi-Fi 6	Wi-Fi 6
	Ethernet Ports (LAN + WAN)	5	5	5	5
	Bandwidth bounding & redundancy	4G + fixed line	4G + 4G + fixed line	5G + fixed line	5G + 4G + fixed line
Hardware	CPU	64-bit Dual-Core ARM			
	NPU	Independent network processing unit			
	Form Factor	Aluminum alloy case			
	Mounting Option	75 x 75 mm VESA mount			
Cellula Network	Communication Standard	LTE, LTE-A, LTE-A Pro, 700 to 2600 MHz		3GPP Release 16 NSA/SA operation Sub-6 GHz	
	Application Network	LTE-FDD LTE-TDD WCDMA		5G NR SA 5G NR NSA LTE-FDD LTE-TDD WCDMA	
	5G NR Transmission Rate	NIL		5G SA Sub-6: - Downstream 2.4Gbps - Upstream 900 Mbps 5G NSA Sub-6: - Downstream 3.4 Gbps - Upstream 500 Mbps	
	4G LTE Transmission Rate	4G LTE CAT-6 Downstream 300 Mbps Upstream 50 Mbps		CAT-19 Downstream 1.0 Gbps CAT-18 Upstream 200 Mbps	
	Network Frequency Band: 5G: Frequency Locking available	NIL		N1/N2/N3/N5/N7/N8/N12/N13/N14/N18/N20/ N25/N26/N28/N29/N30/N38/N40/N41/N48/ N66/N70/N71/N75/N76/N77/N78/N79	
	Network Frequency Band: 4G: Frequency Locking available	B1/B2/B3/B4/B5/B7/B8/B12/B13/B14/B17/B18/ B19/B20/B25/B26/B28/B30/B34/B38/B39/ B40/B41/B42/B43/B66/B71		B1/B2/B3/B4/B5/B7/B8/B12/B13/B14/B17/B18/ B19/B20/B25/B26/B28/B29/B30/B32/B34/ B38/B40/B41/B42/B43/B46/B48/B66/B71	
	Antenna Connectors (SMA)	2 x 5G/4G antennas	4 x 5G/4G antennas	4 x 5G/4G antennas	6 x 5G/4G antennas
Wi-Fi	Wi-Fi Standard	Wi-Fi 6; 802.11 a/b/g/n/ac/ax			
	Operating Frequency	2412MHz ~ 2462MHz & 5180MHz ~ 5825MHz			
	Transmission Rate	2x2 MU-MIMO WiFi 2.4GHz radio: Up to 574Mbps physical data rate 2x2 MU-MIMO WiFi 5GHz radio: Up to 1210Mbps physical data rate			
	Modulation Technology	802.11 b: DSSS (DBPSK, DQPSK, CCK) 802.11 a/g/n: OFDM (BPSK, QPSK, 16-QAM, 64-QAM) 802.11 ac: OFDM (BPSK, QPSK, 16-QAM, 64-QAM, 256-QAM) 802.11 ax: OFDM (BPSK, QPSK, 16-QAM, 64-QAM, 256-QAM, 1024-QAM)			
	Antenna Connectors	2 x Dual bands Wi-Fi antennas (SMA)			
	Wi-Fi Connections:	Max 128 x Wi-Fi connections (concurrently)			
I/O	LAN/WAN Ports	1 x GE RJ45 WAN port/ 4 x GE RJ45 LAN ports (One of RJ45 LAN ports is POE+ input)			
	SIM Options	2 x Nano Sim slots (Single Pass, Single Standby)	2 x Nano Sim slots (Double Pass)	2 x Nano Sim slots (Single Pass, Single Standby)	2 x Nano Sim slots (Double Pass)
	USB Ports	1 x USB 3.0 port (ModBus, RS232/TTY)			
	Reset	1 x Reset / Factory Restore Button			

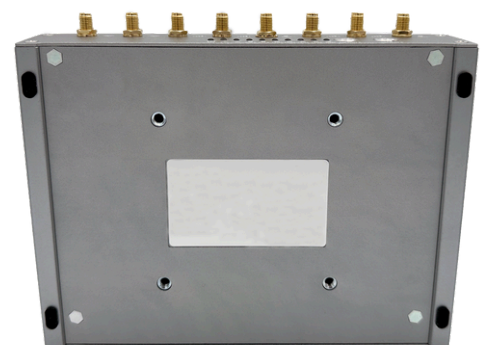
# XATELLITE B SPECIFICATION

Xatellite	Series	Xatellite B			
	Edition	B1	B2	B5	B54
Operation Environment	Temperature	-20°C ~ 70°C			
	Humidity	5% ~ 95% non-condensing			
	Ingress Protection Rating	IP41			
Storage Environment	Temperature	-40°C ~ 85°C			
Power	Input	(1) Standard DC-044A 5.5×2.1mm DC Jack input 24 ~ 56V DC (2) 3 pin industrial phoenix power plug 24 ~ 56V DC (3) IEEE 802.3 AT PoE+ Available adaptors - 24V/2A adaptor (default) - POE+ injector (optional)			
	Consumption	11.35W (Nominal), 48W (Max)			
Functions	Routing & Switching	Support OSPFv2, Policy-Based Routing, NAT, PAT, BFD, Multi-WAN, 802.1Q VLAN, VxLAN, STP, RSTP, MSTP, QinQ over IP, MQTT Broker, etc.			
	Security	Support Sim PIN protection, Firewall, Mac Address Access Control, IP Address Access Control, MACsec, Wi-Fi Encryption authentication			
	VPN	Support IPsec VPN, GRE, WireGuard, EVPN-VXLAN, IPfiber(L2 overlay)			
	GNSS	Support GPS, Beidou, Galileo(Optional)			
	Administrator Maintenance	SSH, WebUI, SNMP, SDM (Remote WebUI/Console access)			
	Cloud Central Management	Yes			
Performance	Router Throughput (Max)	2 Gbps			
	IPSec Throughput (Max)	AES-128-SHA1: 70 Mbps AES-256-SHA256: 60 Mbps			
	IPfiber Throughput (Max)	Standard Encryption (AES-128-GCM-SHA256): 250 Mbps Enhanced Encryption (AES-256-GCM-SHA384): 180 Mbps			
	MACsec Throughput (Max)	GCM-AES-128: 72 Mbps GCM-AES-256: 65 Mbps			
	*Note: Router/IPsec/MACsec/IPfiber Throughput is based on MTU 1500 bytes. Actual performance can vary across different networking environments. Figures apply to the latest hardware revision. The throughput result is tested with DHCP/Static IP.				



**Dimension:**  
188 × 138 × 34.8mm

**Weight (body):**  
≈ 930g



Suitable for 75 × 75 mm VESA mount kit

There might be colour aberration between picture and each existence

## ORDERING INFORMATION

SKU	Packing List
X3510-40-112 (B1: single 4G edition)	<ul style="list-style-type: none"> <li>- Xatellite B router body</li> <li>- Single 4G modem inside</li> <li>- SMA Wi-Fi Antenna (EA-S-W) × 2</li> <li>- SMA 5G/4G/GNSS Antenna (EA-S-5) × 2</li> <li>- AC/DC Adapter, 24V DC/2A - DC Jack(EP-D-24D) × 1</li> <li>*PoE+ Injector is not included.</li> </ul>
X3510-44-112 (B2: dual 4G edition)	<ul style="list-style-type: none"> <li>- Xatellite B router body</li> <li>- Dual 4G modems inside</li> <li>- SMA Wi-Fi Antenna (EA-S-W) × 2</li> <li>- SMA 5G/4G/GNSS Antenna (EA-S-5) × 4</li> <li>- AC/DC Adapter, 24V DC/2A - DC Jack(EP-D-24D) × 1</li> <li>*PoE+ Injector is not included.</li> </ul>
X3510-50-112 (B5: single 5G edition)	<ul style="list-style-type: none"> <li>- Xatellite B router body</li> <li>- Single 5G modem inside</li> <li>- SMA Wi-Fi Antenna (EA-S-W) × 2</li> <li>- SMA 5G/4G/GNSS Antenna (EA-S-5) × 4</li> <li>- AC/DC Adapter, 24V DC/2A - DC Jack(EP-D-24D) × 1</li> <li>*PoE+ Injector is not included.</li> </ul>
X3510-54-112 (B54: 5G + 4G combo edition)	<ul style="list-style-type: none"> <li>- Xatellite B router body</li> <li>- Single 5G modem &amp; single 4G modem inside</li> <li>- SMA Wi-Fi Antenna (EA-S-W) × 2</li> <li>- SMA 5G/4G/GNSS Antenna (EA-S-5) × 6</li> <li>- AC/DC Adapter, 24V DC/2A - DC Jack(EP-D-24D) × 1</li> <li>*PoE+ Injector is not included.</li> </ul>
Accessories	
EP-D-24D	AC/DC Adapter, 24V DC/2A - DC Jack
EP-D-24P	AC/DC Adapter, 24V DC/2A - Phoenix block
EP-P-30R	PoE+ Injector 30W
EA-4M-2	External Waterproof 5G Mushroom Antenna (2 meters )
EA-4M-3	External Waterproof 5G Mushroom Antenna (3 meters)
EA-S-W	SMA Wi-Fi Antenna
EA-S-5	SMA 5G/4G/GNSS Antenna
EI-V75	VESA 75 × 75 mm Mount Kit
EO-UTT	USB to TTL (Xatellite console cable)

\*Any special requirements, please contact to sales representative.



## **STANDARD HARDWARE/SOFTWARE WARRANTY POLICY**

eSIX warrants solely to the original end-user purchaser ("Purchaser") that hardware ("Hardware") purchased from eSIX or our Authorized Partners will be free from defects in materials and workmanship when used within the limits set forth in the documentation (data sheet and user manual) for a period of twelve (12) months, starting from the time of shipment of the Hardware, or the date the Hardware was purchased according to sales registration, whichever is later. (If a 36-month warranty is required, please contact the sales representative.)

This limited warranty is non-transferable and extends only to the original end-user purchaser who acquired the Hardware from an Authorized Partner who has the right to sell in the end-user's territory. eSIX explicitly disclaims any warranty obligations for Hardware that is sold outside of the assigned territory of an Authorized Partner. Your exclusive remedy and eSIX' entire liability under this limited warranty will be for eSIX, at its option, to (a) repair the Hardware with new or refurbished parts, or (b) replace the Hardware with a reasonably available equivalent new or refurbished eSIX Hardware. Any repaired or replacement Hardware will be warranted for the remainder of the original Warranty Period or thirty (30) days, whichever is longer. All Hardware and parts that are replaced become the property of eSIX.

## **EXCLUSION AND LIMITATIONS**

This limited warranty does not apply if: (a) the Hardware assembly seal has been removed or damaged, (b) the Hardware has been altered or modified, except by eSIX, (c) the Hardware damage was caused by use with non eSIX Hardware, (d) the Hardware has not been installed, operated, repaired, or maintained in accordance with instructions supplied by eSIX, (e) the Hardware has been subjected to abnormal physical or electrical stress, abuse, misuse, negligence, or accident, (f) the serial number on the Hardware has been altered, defaced, or removed, (g) the Hardware damage was caused by lightning, power surges or wrong voltage usage, or (h) the Hardware is supplied or licensed for beta, evaluation, promotional, testing or demonstration purposes for which eSIX does not charge a purchase price or fee.

ALL SOFTWARE PROVIDED BY ESIX ("SOFTWARE") WITH OR WITHOUT THE HARDWARE, WHETHER FACTORY LOADED ON THE HARDWARE, CONTAINED ON MEDIA ACCOMPANYING THE HARDWARE OR DOWNLOADED FROM OUR WEBSITE, IS PROVIDED "AS IS" WITHOUT WARRANTY OF ANY KIND.

Without limiting the foregoing, eSIX does not warrant that the operation of the Hardware or Software will be uninterrupted or error free. Also, due to the continual development of new techniques for intruding upon and attacking networks, eSIX does not warrant that the Hardware, Software or any equipment, system or network on which the Hardware or Software is used will be free of vulnerability to intrusion or attack. The Hardware and Software may include or be bundled with third party software or service offerings. This limited warranty shall not apply to such third party software or service offerings. This limited warranty does not guarantee any continued availability of a third party's service for which this Hardware's or Software's use or operation may require.